



Prince of Wales Chamber of Commerce

# Chamber POWer

“Working Together for Progress”  
164 Members Strong

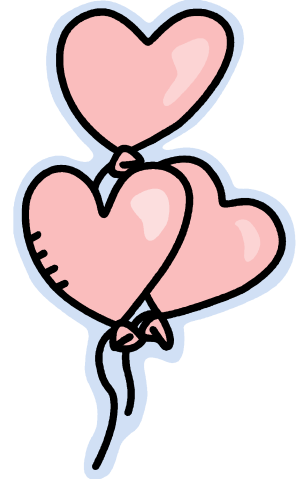
PO Box 490, Klawock, Alaska 99925  
Phone: 907-755-2626, Fax: 907-755-2627  
Email: [info@princeofwalescoc.org](mailto:info@princeofwalescoc.org)

Volume 18, Issue 2, February 2007 [click here to see our website: www.princeofwalescoc.org](http://www.princeofwalescoc.org)



## In This Issue

1. Web Hits for January
2. Chamber POWer
3. From the President's Desk
4. Welcome to Denise Daniels
5. Annual Awards Event is April 15th
6. 2006 Awards Nominations
7. COMMITTEES NEED YOU
8. Fair and Logging Show Committee
9. Welcome New Members
10. Forest Products Task Force
11. February 2007 Board Meeting
12. Hunters, Loggers, Feces!
13. Website Update
14. Island Guide Update
15. Board of Directors



## 1. Web Hits!

December's unique web hits (first time viewers) were 1940 visitors.  
December's total visitors were 2923.  
These visitors looked at a total of 51212 pages in January, 2007.



## 2. Chamber POWer: *Thanks to the following sponsors of this month's Newsletter.*

**Arrowhead LP Gas**—Craig/907-826-2944/fax 907-826-3916/[www.arrowheadlpgas.com/](http://www.arrowheadlpgas.com/) Sharilyn Zellhuber, Manager. Full service propane gas professionals. Whirlpool and GE appliances. RV accessories. Gas fireplaces and water heaters. Sales and installation.

**First Bank** – Craig / 907-826-3254 / fax 907-826-3910 / [www.firstbankak.com](http://www.firstbankak.com) / Lynnette Logan, manager  
A full service community bank offering checking, savings and time deposit accounts; consumer, commercial, construction, and home loans; and online banking services. ATM's located at First Bank and at West Wind Plaza in Craig.

**The Computer Palace** – Craig / 907-826-2216 / [www.pow-tech.com](http://www.pow-tech.com) / Computer repairs, upgrades and sales. Video game systems and video game sales.

**Thomas B** – Craig / 907-826-5420 / [www.carvedfromatree.com](http://www.carvedfromatree.com) / Original wood sculptures of sea life carved from Alaska hemlock, yellow and red cedar. Custom orders welcomed, shipped anywhere.

**Tongass Business Center** – Ketchikan / 618 Dock St. / Ketchikan, AK 99901 / 1-800-478-9015 / 907-225-9015 / Fax 907-225-9014 / [www.tbcenter.com](http://www.tbcenter.com) / Call for Catalog. Office Equipment & Supply, Sharp Copiers & Faxes, Printing & Binding, Newsletters, Office Furniture. **Come by the Chamber office for the new catalog!**

**Birds Eye View Bed and Breakfast** – Craig / 907-826-5987 / PO.Box 383 / Craig, AK 99921 / Located downtown Craig. Situated on a hill, one can take in the ocean's activity from the panoramic view. It is presently set up for singles or a couple. Alaskan decor, quiet atmosphere non-smoking. Private bathroom, TV & phone. Parking and sack lunch available on request.

---

### 3. From the President's desk:

*Hello and welcome to mid-winter!* In the last issue we announced the departure of our office manager, Serafin Lara, who departed POW at the beginning of 2007. January was a month of transition, full of challenges and opportunities.

We owe a debt of gratitude to Megan Hofferber. She has spent most all of her "free time" in our office while holding down her own job with the Craig City School District. She began with the monumental task of getting all of the Island Guide information verified and delivered to our Guide creator. This entailed reviewing all of the primary documents and following up on a mountain of emails and checking on accounts. She has responded to information requests and helped the hiring committee put together a scoring mechanism to evaluate the applications, interviews and reference checks.

The Board was pleased to receive five quality applications, and subsequently interviewed four outstanding applicants for the office position. References were checked and a decision made. Read the Welcome that follows to introduce our new office hire.

Office change brings with it a loss of momentum, but the board is confident that we will overcome that in short order. In the meantime, your patience and understanding is greatly appreciated.

### 4. Welcome to Denise Daniels!

From among four outstanding candidates for the Chamber office position, the Hiring Committee chose Denise Daniels. You are invited to stop by the office and welcome her to Chamber Country.

Denise is a former small business owner. She owned and operated *Colours: Computers, Copies and Creativity, Inc.* for ten years subsequent to ten years of experience as an assistant manager for *Kinko's Copies*. Both of these businesses were located in Colorado. Her experience also includes web design and development, vast computer skills and long term acquaintance with office machines. More than that, her references highlighted a strong track record of customer satisfaction and public relations. Her portfolio matched up well with the POW Chamber's current needs. We are confident that these and other attributes will become evident to all of our membership in what we hope will be a long and fruitful relationship. Welcome aboard, Denise!

## 5. Annual Awards Event is April 15<sup>th</sup>, 2007

The Board of Directors invites its members and the general public to set aside Sunday afternoon, April 15<sup>th</sup>, 2007 for the Annual Awards Event. This event will include a Wine Tasting and a Benefit for the POW Cancer Coalition. More details will follow in the March and April newsletter

## 6. 2006 Award Nominations

Included in this newsletter, or attached to a separate email, you will find the Nomination Form for the 2006 Chamber awards. Please take the time to consider each of the award classifications and return your nominations by the March 9th deadline. Last year's nominees and recipients are also included as a reminder and further congratulations to these POW citizens.

The Board of Directors and their respective businesses will not be considered for this annual recognition.

Letters of support and other testimonies are very beneficial for the consideration of these awards. At the very least, please include with your nominations, the reasons that you have nominated the individuals and businesses for the awards. A committee of board members and other interested Chamber members will make the final determination of recipients to be honored at the 2006 Awards Event

## 7. Committees NEED YOU!

Director Jim Seley has accepted the Chairmanship of the **RETAIL TRADE** committee and is looking for interested Chamber members and business owners to tackle the issues facing Island businesses. Call Jim or stop by JS Hardware to volunteer your efforts to make a difference for all of POW. Jim is waiting to hear from you!

The **ANNUAL AWARDS SPECIAL EVENT COMMITTEE** is being formed to help plan and carry out this annual event. Please call the office and volunteer your time and talent to put on a first class event. Term of effort will be for the next two months that lead up to the April 15<sup>th</sup> event that will include a Wine and Brew Tasting. A benefit for the POW Cancer Coalition will be held in conjunction with this event. This effort will be planned by a separate committee.

**POW CANCER COALITION BENEFIT PLANNING COMMITTEE:** Each of us is impacted in some way by the effects of cancer. We have a family member suffering from its effects or we know an island resident who is currently undergoing treatment. The Chamber has adopted the coalition as a beneficiary of fundraising efforts this year. The events of April 2007 (Awards event, Trade Show and Queen Charlotte Island Reciprocal visit) will provide a framework for the effort that will include a raffle and auction. This effort has already been blessed with offers to coordinate the auction portion. To lend your support and help, please call the Chamber office and leave your contact information.

The **QUEEN CHARLOTTE ISLAND CHAMBER RECIPROCAL VISIT** is tentatively scheduled to coincide with the **FOREST PRODUCTS SYMPOSIUM** and a **POW ISLAND TRADE SHOW** at the end of April. Many hands are needed to host a successful engagement for the Queen Charlotte Island Community representatives who rolled out the red carpet for the POW contingent during the spring of 2005.

Can a **TRADE SHOW** be returned to a successful format once again and gather Island businesses under one roof to showcase what we have to offer? Do you have the missing ingredient to bring back this once popular island event to its former full fare? Leave your contact information with the office if you are interested in helping to put together a successful island wide event that will market our Island businesses.

## 8. FAIR AND LOGGING SHOW COMMITTEE

The Fair and Logging Show committee continues its planning for the 2007 event. The next meeting is scheduled for Monday, February 12<sup>th</sup> at St. John's Church Hall in Klawock. A potluck meal begins at 6:00 PM with the meeting scheduled from 6:30 until 8:00 PM. Please join us and share your ideas, time and talent to make this year's show an event to remember!



## 9. WELCOME TO OUR NEW MEMBERS, added since last month:

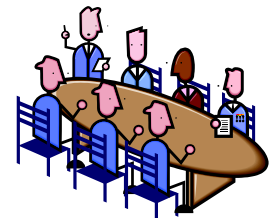
Jay Bruns, Dave's Diner, Annie Betty's, Jan Stevens, Prince of Wales Glass, Alaska Commercial Company, The Feed Store

## 10. Forest Products Task Force

Hans Geir's presentation is on the 9th (this week) in the Klawock Chamber Office at High Noon. Topic - Forest Product Task Force Discussion on "Trade Associations" what are they; what can they do for the small operators on POW; questions and answers! Plan to go to 03:00PM. Bring a Sack Lunch. Friday there is a similar presentation by Hans at Naukati for the Shellfish Growers Association at Art King's House; Art King's phone is 828-3207. Hans Geir is with the Alaska Cooperative Development Program and the University of Alaska cooperative Extension Service.

## 11. February 2007 Board Meeting

The February Board meeting will take place Tuesday the 13<sup>th</sup> at the Chamber office, 6 pm. All are welcome to attend.



## 12. Hunters, Logging, and Feces!

What do these things have in common? Find out at one of two public presentations on Prince of Wales Island! Todd Brinkman is a Ph.D. Candidate at the University of Alaska Fairbanks. He has been conducting deer and deer hunter research on Prince of Wales for the last 4 years.

Todd will present information from interviews he conducted with 88 deer hunters on POW. In addition, he will discuss current and future research on deer populations in Southeast Alaska.

Todd will be speaking in Thorne Bay on Monday February 12th at 5:30pm in the Thorne Bay Ranger District Conference Room, and on Thursday February 16th in Craig at the Craig Community Association building at 7pm. For more information please call Karen Petersen with UAF Cooperative Extension Service at 828-3207, or Larry Dickerson with the USFS, Craig Ranger District

## 13. Website Update

The issues that have negatively impacted the Chamber website are being resolved and the information is being updated section by section, piece by piece. The directors need help from anyone who is willing to monitor the progress and call attention to those items which are out of date. The Chamber is also going to be given access to make its own changes and updates, which will improve our ability to keep our membership's postings up to date, and to utilize the calendar to advertise island happenings.

Once the Island Guide is proofed and ready for print, it will also be added as a link on our website and immediately available to those who visit for information.

## 14. Island Guide Update

The Business Directory portion of the 2007 Island Guide will be attached to a separate email in PDF format and sent to our current membership. We ask that each of you review your listings and let the office know of any errors. A great deal of effort has been put into verifying all of the information that is included, but one last check won't hurt before the Guide goes to print, and your attention to your own listing is the best kind of attention and review.

Those of you who have volunteered to proofread can expect a phone call during the next week to lend your eyes to the effort to provide an error free copy to the printers.

Once the Guide is back, we would like to form the steering committee for the 2008 Guide. This effort will include a page by page review of the 2007 Guide with the objective to list suggestions for changing or adding features to the next issue, to set up a timeline and effort to secure new photos, and to make the contacts to update texts especially on community pages. The ultimate goal of this committee is to work with the Office Manager to get 20,000 copies of the 2007 Guide distributed by the end of the year and to have the 2008 issue to the printer by November 15<sup>th</sup>, 2007.

## 15. Board of Directors, wishing you a Happy Valentine's Day!

**President-** Jan Bush, **B-3 Contractors** [belle@aptalaska.net](mailto:belle@aptalaska.net)

**Past President-** John Bruns, **Prince of Wales Hatchery Association**  
[powha@aptalaska.net](mailto:powha@aptalaska.net)

**Vice-President-** Julie Isom, **City of Thorne Bay & SISD** [jisom@sisd.org](mailto:jisom@sisd.org)

**Secretary-** Carolyn Chapman, **IFA** [cchapman@interislandferry.com](mailto:cchapman@interislandferry.com)

**Treasurer-** Karen Cleary, **Cleary Computer Services** [kcleary@aptalaska.net](mailto:kcleary@aptalaska.net)

**Director- Mark Jaqua**, Southeast Island School District [mjaqua@sisd.org](mailto:mjaqua@sisd.org)

**Director-** John Moots, **Alaska Power and Telephone** [john.m@aptalaska.com](mailto:john.m@aptalaska.com)

**Director-** Gail Colberg, **Davies Barry Insurance**, [gail@davies-barry.com](mailto:gail@davies-barry.com)

**Director-** Jim Seley, **JS Warehouse & Builders Supply** [jseley@aptalaska.net](mailto:jseley@aptalaska.net)

Office Manager-Denise Daniels



